



Beaufort County Public Works **Stormwater Infrastructure** *Project Summary*

Project Summary: Munch Drive

Project #: 2010-088 Completed: Dec-09

Narrative Description of Project:
 Project improved 1,520 L.F. of drainage system. Cleaned out 1,520 L.F. of outfall ditch. Installed (1) bleeder pipe. Repaired washout. Installed rip rap for erosion control.

Material Cost, Rental Equipment Summary, and Labor

Material	Unit	Cost/Unit	Qty	Cost
12" HDPE Pipe	linear feet	\$4.86	20.0	\$97.20
Fill Dirt	ton	\$1.00	42.4	\$42.42
Rip Rap	ton	\$47.08	7.5	\$350.75
Silt Fence	sy	\$0.78	7.8	\$6.07
Turf Staples	each	\$0.03	40.0	\$1.20
Pin Flag	each	\$0.06	15.0	\$0.90
Gas	gallon	\$2.40	5.0	\$12.00
Diesel	gallon	\$2.41	96.5	\$232.57
Labor	hours		135.0	\$4,610.99

Total Cost of Materials, Rental Equip., and Labor \$5,354.09

Note: Labor cost includes the employee's salary plus fringe benefits.

Equipment Cost

Item	Asset	Cost/Hour	Hrs.	Cost
Komatsu Mini Excavator	23000	\$18.65	9.5	\$177.18
JCB Urban Excavator	23364	\$40.53	5.0	\$202.65
Dump Trucks		\$16.68	31.0	\$517.08
Pickup Trucks		\$4.17	36.0	\$150.12

Total Equipment Cost \$1,047.03

Cost/hour excludes fuel cost.

Total Cost: \$6,401.11

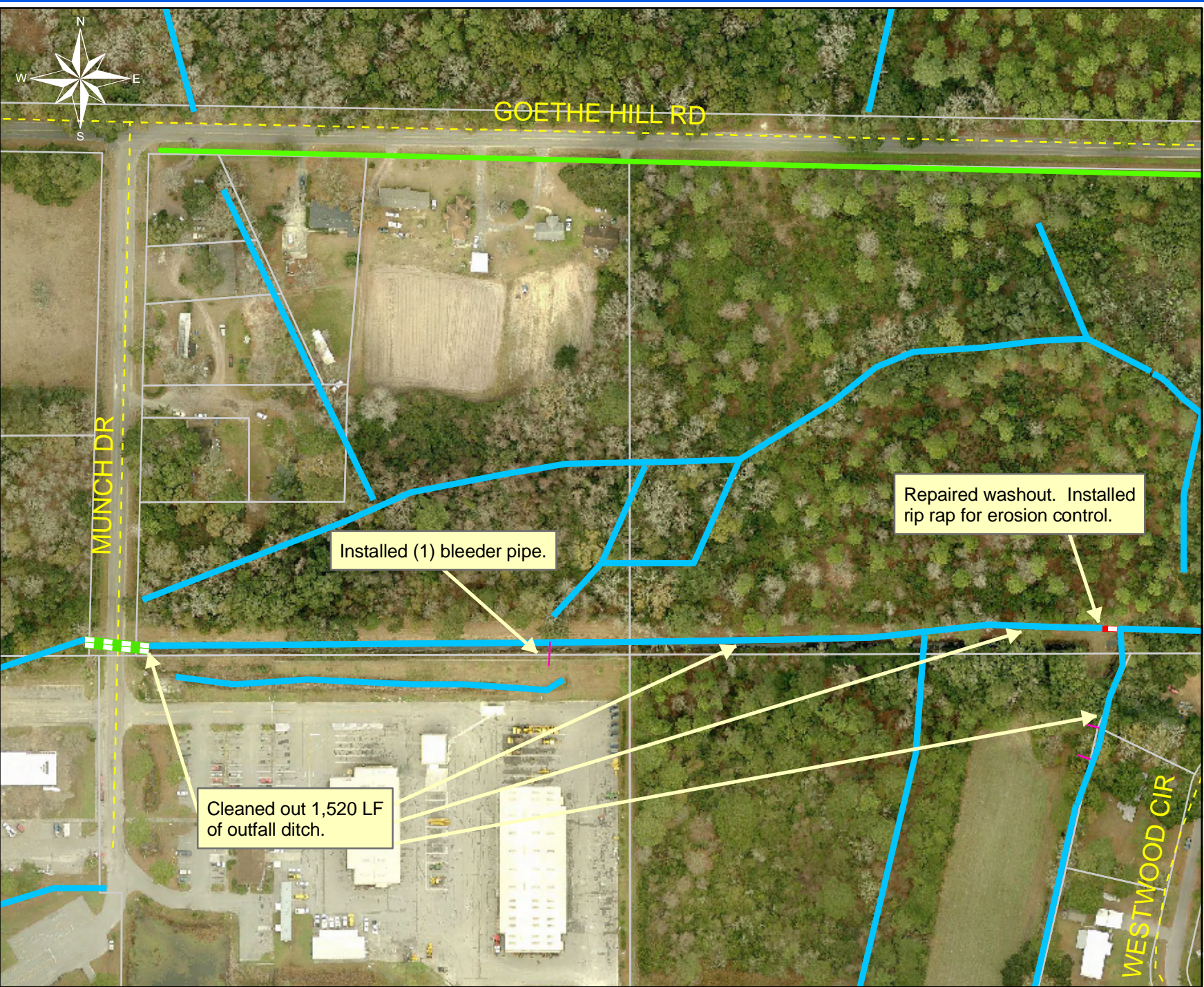
Site Photographs

Before



During





Project: Munch Drive

Activity: Drainage Maintenance

Project #: 2010-088

Township: Port Royal Island

Completed: December 2009

Legend

Drainage Type

- River
- Stream
- Outfall
- Lateral
- Roadside
- Roadside Pipe
- Crossline
- D/W
- Access
- Piped
- Bleeder



1 inch equals 179.51 feet